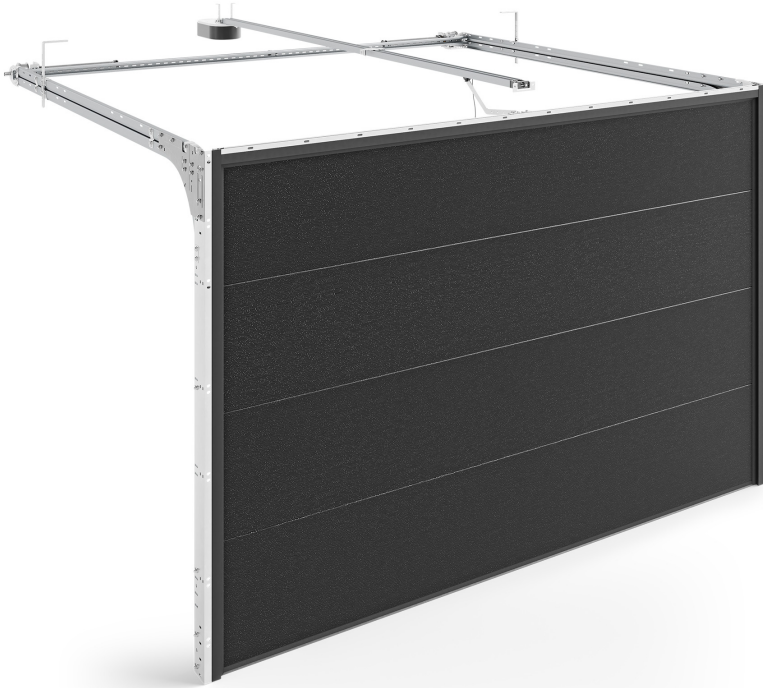


# INFINITI Thermo R – doors with torsion springs (back)



- ✓ panel thickness: 60 mm
- ✓ maximum door weight: 165 kg
- ✓ minimum rebate width: 100 mm
- ✓ minimum lintel height: 150 mm
- ✓ panels painted in RAL colours or veneered
- ✓ smooth or high embossed panels
- ✓ rear torsion springs

**0.81**

Heat transfer  
coefficient U [W/m<sup>2</sup>K]\*

**0.89**

Heat transfer  
coefficient U [W/m<sup>2</sup>K]\*\*

**5.5 m**

maximum width

**3 m**

maximum height

**12.5 m<sup>2</sup>**

maximum size

**The INFINITI Thermo R sectional garage door** is primarily but not exclusively designed for use in residential buildings. It proves effective wherever thermal insulation is crucial. **The INFINITI R system means that the door's torsion mechanism takes up less space in the lintel, making installation easier.**

**The distinguishing feature of INFINITI Thermo sectional doors is the panels made of galvanised steel filled with thermal insulation material.** They are 60 mm thick, which is half more than the previous standard for well-protected garages – 40 mm. The panels have double seals on the bottom interlock and a double-lip seal with a thermal chamber around the perimeter. Additionally, **the panel has a uniform thickness throughout its height, ensuring effective thermal insulation free from thermal bridges.** As a result, less heat dissipates through the

garage door.

Advanced and dependable security systems ensure that operating the door is completely safe. With a wide range of aesthetic options available, it can be customised to complement any architectural style and cater to the preferences of all investors. **INFINITI Thermo R doors can also be equipped with numerous additional accessories**, which, for the convenience of buyers, have been combined into personalised packages: Quiet, Safe, and Premium.

\*Heat transfer coefficient  $U$  [ $W/m^2K$ ] given for INFINITI Thermo sectional doors with dimensions of 5000 x 2500 mm. For gates without glazing, service doors, ventilation grilles.

\*\*Heat transfer coefficient  $U$  [ $W/m^2K$ ] given for INFINITI Thermo sectional doors with dimensions of 2500 x 2250 mm. For gates without glazing, service doors, ventilation grilles.