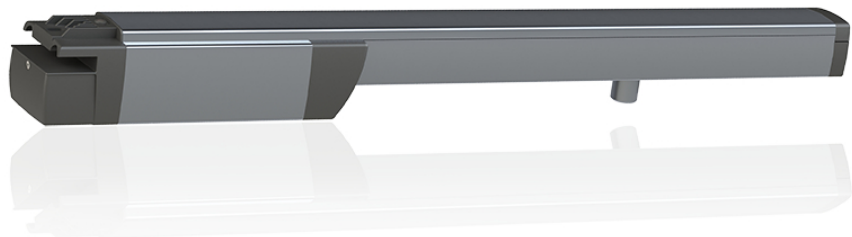


Ixengo 24 V



- ✓ wicket feature
- ✓ soft-closing feature
- ✓ unidirectional or bidirectional radio control – optional
- ✓ maximum gate leaf width: 4 m
- ✓ maximum gate leaf weight: 400 kg
- ✓ energy consumption idle/active: 6 W / 40 W

Ixengo 24 V, a drive designed for double-leaf gates, is robust and reliable. It operates comfortably for many years thanks to mechanisms such as torque control and soft-closing.

The convenience of use is enhanced by the wicket feature allowing the gate to be opened just enough for a pedestrian to pass through. A mechanism that prevents uncontrolled reversing makes the gate resistant to high wind loads.

Control is easy. It works based on uni- or bidirectional radio control on the Ixengo L 3S RTS and Ixengo L 3S io operators respectively. Bidirectional communication guarantees safety by reporting the status of the leaf every time, e.g. when it has been successfully closed. The drive can confirm the execution of any command, which, depending on the chosen system, is issued by remote control, wall transmitter or mobile app.

The standard Ixengo 24 V drive is available in two versions with advanced control systems:

- Ixengo L 3S RTS – unidirectional remote communication
- Ixengo L 3S io – bidirectional remote communication