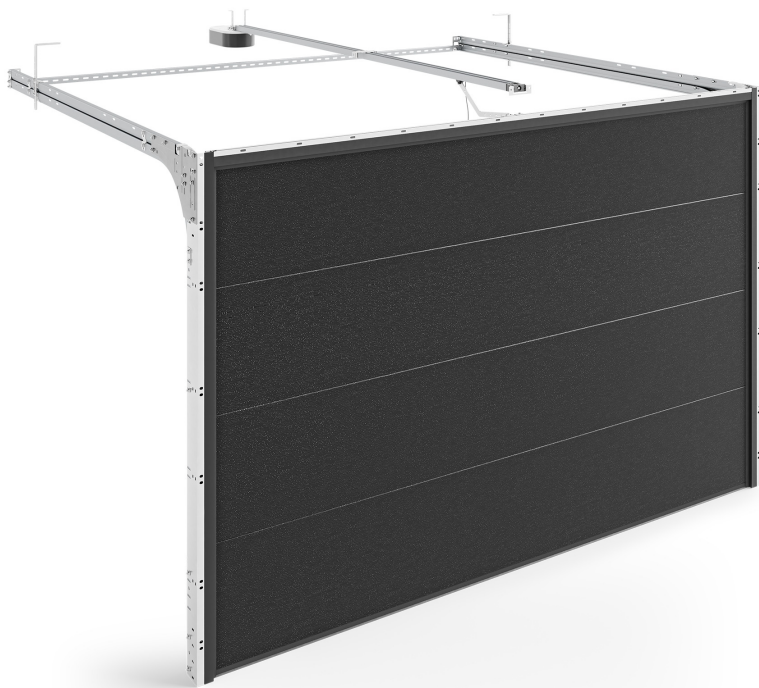


INFINITI X – doors with tension springs



- ✓ panel thickness: 40 mm
- ✓ available in standard and thermal version
- ✓ maximum weight: 130 kg
minimum dimensions of jambs: 85 mm
minimum dimensions of the lintel: 120 mm
- ✓ we offer panels with a smooth external surface, woodgrain structure with low and high embossing (varnished according to a rich RAL palette) or veneered
- ✓ recommended for installation in small garages
- ✓ quick installation does not require special winding of the springs
- ✓ uses a double spring mechanism

4,5 m

maximum width

3 m

maximum height

9 m²

maximum size

Made of the best components. INFINITI sectional doors are durable and ensure safety in every home. Thanks to a wide range of accessories, it is possible to adapt them to many arrangements.

All fittings and upper handles with rollers in gates with springs are galvanised as standard (silver colour). They can be painted in white RAL 9016.

GARAGE DOOR

EXTENSION SPRINGS

ALUMINUM

